

## AIR CYLINDER

### Series A63, A64

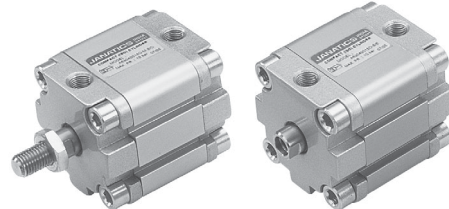
Cat No A63, A64 - 01 - 02

### Double Acting Cylinder (Compact ISO type) Ø32 - 100 mm

As per ISO 21287 standards

#### Features

- Elastomer end cushioning
- Wide varieties of mountings
- Space saving
- Magnetic and Non magnetic version
- Aluminium profile (square) cylinder barrel
- Magnetic sensor common for all sizes  
( Refer Magnetic sensor catalogue )



#### Technical Specifications

Piston dia ( mm )	32	40	50	63	80	100
Standard strokes * ( mm )	10 15 20 25 30 40 50 60 70 80					
Medium	Compressed air - filtered - lubricated					
Working pressure range	0.5 - 10 bar					
Medium temperature	5° - 60° c					
Materials of construction	Aluminium, Nitrile, Steel, Polyurethane					
Mountings	Basic cylinder, Rear flange,		Foot mounting, Male clevis,		Front flange, Female clevis,	
Accessories	Clevis foot bracket,		Wall mounting bracket,		Rod end fork, Rod end spherical eye	

\* For Non standard or longer stroke cylinders, contact your regional office, dealer or **JANATICS**

#### Output force ( force in N : 1N = 0.1 kgf )

Bore dia in mm	Rod dia in mm		Working pressure in bar								
			2	3	4	5	6	7	8	9	10
32	12	Extend	145	217	289	362	434	507	579	651	724
		Retract	124	187	249	311	373	435	498	559	622
40	12	Extend	226	339	452	565	678	792	905	1018	1130
		Retract	206	309	411	514	617	720	823	926	1029
50	16	Extend	353	530	707	883	1060	1237	1413	1590	1767
		Retract	317	476	634	793	952	1110	1269	1427	1586
63	16	Extend	561	842	1122	1403	1683	1964	2244	2525	2805
		Retract	525	787	1050	1312	1575	1837	2099	2362	2624
80	20	Extend	905	1357	1809	2262	2714	3167	3619	4071	4524
		Retract	848	1272	1696	2120	2544	2969	3393	3817	4241
100	20	Extend	1414	2120	2827	3534	4241	4948	5655	6362	7068
		Retract	1357	2036	2714	3393	4071	4750	5429	6107	6786

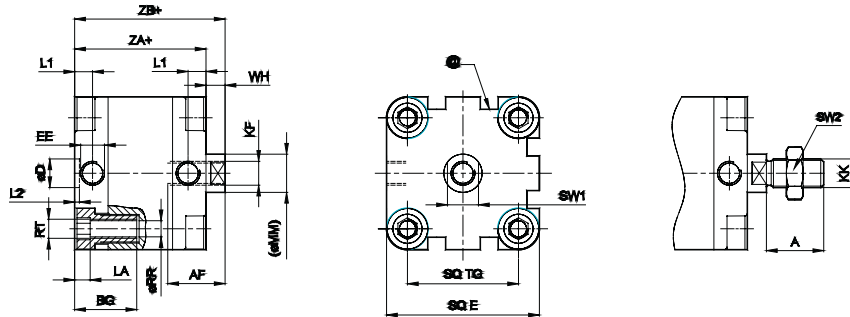
( Above values have been worked out taking frictional loss into consideration )

# AIR CYLINDER

Series A63, A64

Cat No A63, A64 - 01 - 02

## Basic cylinder



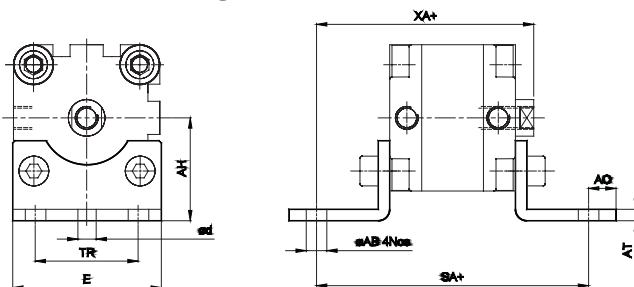
+ Add stroke

Bore dia	KF	MM	AF	RR min	RT	SW1	L1	LA	BG min	EE	TG	E max	D H10	L2	ZA	TOL	ZB	TOL	WH	TOL	KK	A -0.5	SW2	Stroke tol
32	M8x1.25	12	12	5.1	M6	10	7.5	5.5	15	G1/8	32.5	45	10	2	44	±0.5	51	±1.6	7	±1.6	M10x1.25	19	17	+2.0
40	M8x1.25	12	12	5.1	M6	10	7.5	5.5	15	G1/8	38	51			45	±0.7	52		7		M10x1.25	19	17	
50	M10x1.5	16	16	6.4	M8	13	7.5	5.5	16	G1/8	46.5	64	12	2	45	±0.8	53	±2	8	±2	M12x1.25	22	19	+2.5
63	M10x1.5	16	16	6.4	M8	13	7.5	5.5	16	G1/8	56.5	74			49		57		8		M12x1.25	22	19	
80	M12x1.75	20	20	8.4	M10	17	8	5.5	17	G1/8	72	94	12	3	54	±1	64	±2	10	±2	M16x1.5	28	24	+2.5
100	M12x1.75	20	20	8.4	M10	17	12.5	5.5	17	G1/8	89	111			67		77		10		M16x1.5	28	24	

@ - T Groove for magnetic sensor, Refer catalogue series AM4

## Foot mounting

+ Add stroke

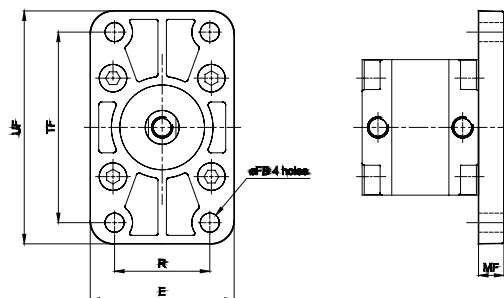


Bore dia	AB H14	AO max	AT	AH JS16	d*	TR JS14	E	SA	TOL	XA	TOL	Recommended Bolt size
32	7	7	4	33.5	5.8	32	46	76		67		M6
40	10	9	4	38	7.8	36	52	81	±1.25	70	±1.25	M8
50	10	9	5	45	7.8	45	65	87		74		
63	10	9	5	50	7.8	50	75	91		78		M10
80	12	11	6	63	9.8	63	95	106	±1.6	90	±1.6	
100	14.5	13	6	74	11.8	75	115	121		104		M12

\* Suitable for reaming

## Front flange

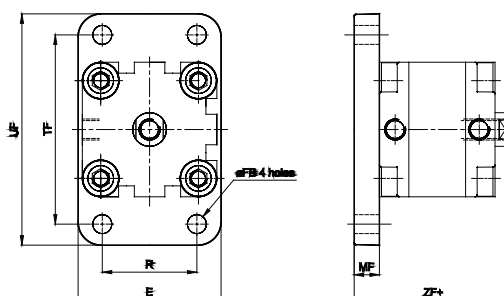
+ Add stroke



Bore dia	MF	UF	TF ±0.3	R ±0.3	E	FB H13	Recommended Bolt size
32	10	80	64	32	50	7	M6
40	10	90	72	36	55	9	M8
50	12	110	90	45	68	9	
63	12	125	100	50	78	9	M10
80	16	155	126	63	100	12	
100	16	185	150	75	120	14	M12

## Rear flange

+ Add stroke



Bore dia	MF	UF	TF ±0.3	R ±0.3	E	FB H13	ZF	TOL	Recommended Bolt size
32	10	80	64	32	50	7	61	±1.8	M6
40	10	90	72	36	55	9	62		M8
50	12	110	90	45	68	9	65	±2.2	
63	12	125	100	50	78	9	69		M12
80	16	155	126	63	100	12	80		
100	16	185	150	75	120	14	93		

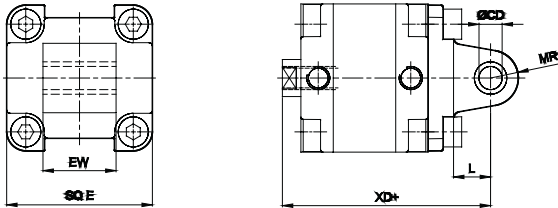
# AIR CYLINDER

Series A63, A64

Cat No A63, A64 - 01 - 02

## Male clevis

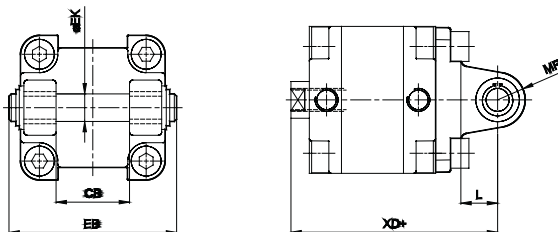
+ Add stroke



Bore dia	CD H9	EW -0.2 -0.6	L	MR	E max	XD	TOL
32	10	26	12	11	45	73	±1.8
40	12	28	15	13	51	77	
50	12	32	15	13	64	80	
63	16	40	20	17	74	89	±2.2
80	16	50	20	17	94	100	
100	20	60	25	21	111	118	

## Female clevis

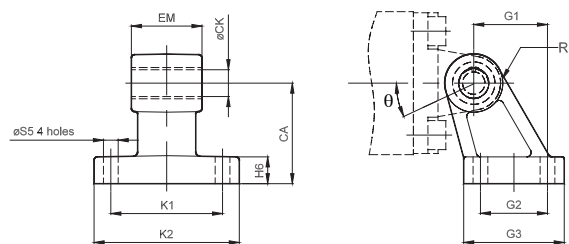
+ Add stroke



Bore dia	EK e8	CB H14	L	MR	EB max	XD	TOL
32	10	26	12	11	56	73	±1.8
40	12	28	15	13	65	77	
50	12	32	15	13	73	80	
63	16	40	20	17	86	89	±2.2
80	16	50	20	17	106	100	
100	20	60	25	21	129	118	

## ACCESSORIES FOR AIR CYLINDER Series A63, A64

### Clevis foot bracket ( CETOP - RP 107 P )



Bore dia	K1 Js14	G2 Js14	S5 H13	CA Js15	CK H9	EM -0.2 -0.6	G1 Js14	H6	R1 max.	K2	G3	θ°	Recommended Bolt size	Ordering no. @
32	38	18	6.6	32	10	26	21	8	10	51	31	10	M6	AA1032
40	41	22	6.6	36	12	28	24	10	11	54	35	15	M6	AA1040
50	50	30	9	45	12	32	33	12	13	65	45	15	M8	AA1050
63	52	35	9	50	16	40	37	12	15	67	50	15	M8	AA1063
80	66	40	11	63	16	50	47	14	15	86	60	15	M10	AA1080
100	76	50	11	71	20	60	55	15	19	96	70	15	M10	AA1100

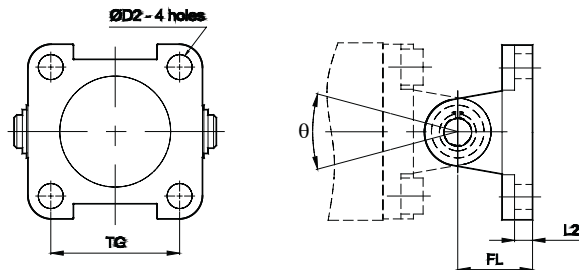
@ Adoptable to cylinder with female clevis

# AIR CYLINDER

Series A63, A64

Cat No A63, A64 - 01 - 02

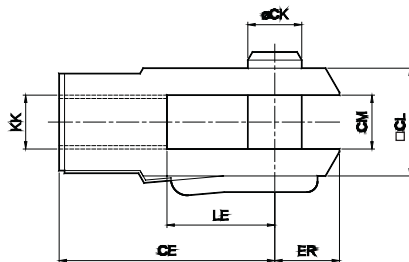
## Wall mounting bracket



Bore dia	TG	D2	L2	FL	θ°	Recommended Bolt size	Ordering no. @	Ordering no. #
32	32.5	6.6	5.5	22	90	M6	AV1032	AW1032
40	38	6.6	5.5	25	90	M6	AV1040	AW1040
50	46.5	9	6.5	27	90	M8	AV1050	AW1050
63	56.5	9	6.5	32	90	M8	AV1063	AW1063
80	72	11	10	36	60	M10	AV1080	AW1080
100	89	11	10	41	60	M10	AV1100	AW1100

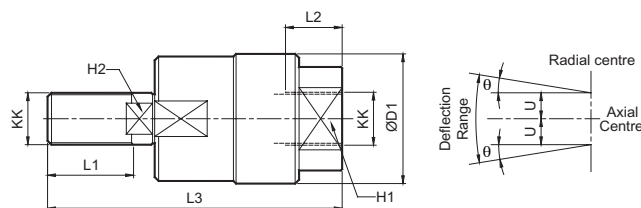
@ Adoptable to cylinder with male clevis  
# Adoptable to cylinder with female clevis

## Rod end Fork (ISO 8140)



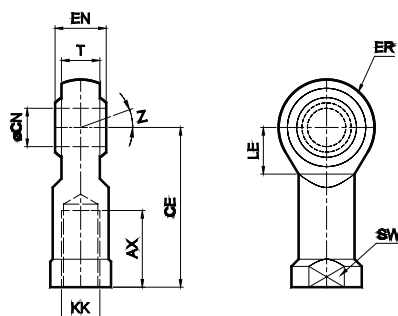
Bore dia	KK	CE	CK f8	CM B12	LE	ER max	CL	Ordering no.
32 / 40	M10x1.25	40	10	10	20	16	20	AF010
50 / 63	M12x1.25	48	12	12	24	19	24	AF012
80 / 100	M16x1.5	64	16	16	32	25	32	AF016

## Rod end Aligner



Bore dia	KK	L1	L2	L3	H1	H2	D1	U	± θ°	Ordering no.
32 / 40	M10x1.25	20	14	65	17	8	28	0.75	5	AR010
50 / 63	M12x1.25	22	18	75	19	10	32	1	5	AR012
80 / 100	M16x1.5	25	22	91	27	13	41	1	5	AR016

## Rod end spherical eye (ISO 8139)




Bore dia	KK	CN H9	T	EN h12	CE	LE min	ER max	AX	SW	Z	Ordering no.
32 / 40	M10x1.25	10	10.5	14	43	15	14	20	17	13°	AP010
50 / 63	M12x1.25	12	12	16	50	17	16	22	19		AP012
80 / 100	M16x1.5	16	15	21	64	22	21	28	22	15°	AP016

## AIR CYLINDER

### Series A63, A64

Cat No A63, A64 - 01 - 02

#### How to order

**A** 

Model		Piston Ø (mm)	Stroke (mm)	Mountings	M - Male thread
63	Magnetic cylinder	032 - Ø 32	010 - 10	O - Basic	
64	Standard cylinder	040 - Ø 40	015 - 15	L - Foot Mounting	
		050 - Ø 50	020 - 20	F - Front Flange	
		063 - Ø 63	025 - 25	R - Rear Flange	
		080 - Ø 80	030 - 30	S - Male Clevis	
		100 - Ø 100	040 - 40	D - Female Clevis	
			050 - 50		
			060 - 60		
			070 - 70		
			080 - 80		

#### Example:

Ordering no. for standard cylinder with 40 dia bore, 50 mm stroke with Female thread : **A64 040 050 O**

Ordering no. for standard cylinder with 40 dia bore, 50 mm stroke with Male thread : **A64 040 050 O - M**


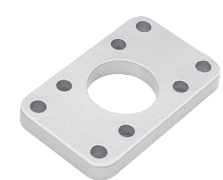
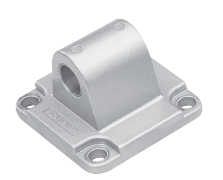
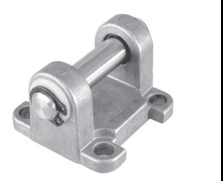
#### Note:

If ordered as 40 dia, 50 mm stroke cylinder, Basic cylinder **A64 040 050 O** will be supplied.

For repeat order when the details are taken from cylinder nameplate, mention the mounting style separately.

For ordering **Accessories** refer corresponding tables for part numbers.

For ordering individual **Mounting** kits ( If needed separately ) the order numbers are as below

Piston Ø	Foot mounting *	Front / Rear flange *	Male clevis *	Female clevis *
				
32	ML2032	MF1032	MS1032	MD1032
40	ML2040	MF1040	MS1040	MD1040
50	ML2050	MF1050	MS1050	MD1050
63	ML2063	MF1063	MS1063	MD1063
80	ML2080	MF1080	MS1080	MD1080
100	ML2100	MF1100	MS1100	MD1100

\* Supplied with 4nos. of screws

For your special requirements of cylinders or for further informations contact your regional office, dealer or **JANATICS**

Subject to change