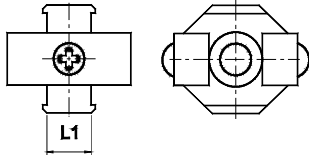


AIR PREPARATION UNITS - ACCESSORIES

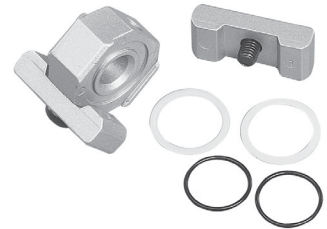
Accessories - for Modular construction

Cat No APA - 01

SPACER



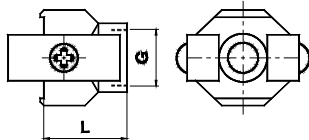
| Adoptable to Model series | L1 | Ordering No. |
|---------------------------|----|--------------|
| F13, L13, R13, FRC13 | 12 | A2S01 |
| F14, L14, R14, FRC14 | 14 | A2S02 |
| F15, L15, R15, FRC15 | 16 | A2S03 |



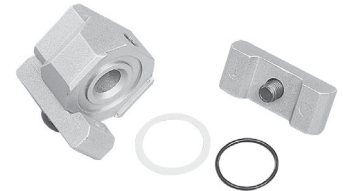
How to order :- Mention the Model number required

Example :- Spacer for 3 / 8 Filter , Regulator , Lubricator Series F14 , R14 , L14 : Ordering no : A 2 S 0 2

PIPING ADAPTOR



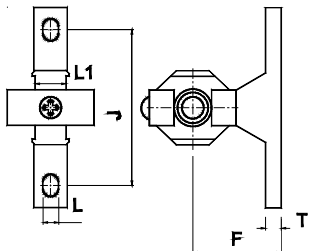
| Adoptable to Model series | G | L | Ordering No. |
|---------------------------|-----|----|--------------|
| F13, L13, R13, FRC13 | 1/4 | 27 | A2P01 |
| F14, L14, R14, FRC14 | 3/8 | 29 | A2P02 |
| F15, L15, R15, FRC15 | 1/2 | 32 | A2P03 |



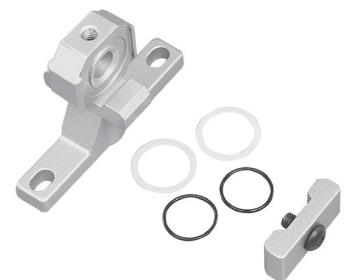
How to order :- Mention the Model number required

Example :- Piping Adaptor for 3 / 8 Filter , Regulator , Lubricator Series F14 , R14 , L14 : Ordering no: A 2 P 0 2

WALL MOUNTING BRACKET



| Adoptable to Model series | L1 | J | L | F | T | Ordering No. |
|---------------------------|----|----|---|----|---|--------------|
| F13, L13, R13, FRC13 | 12 | 50 | 7 | 35 | 7 | A2W01 |
| F14, L14, R14, FRC14 | 14 | 70 | 7 | 45 | 7 | A2W02 |
| F15, L15, R15, FRC15 | 16 | 90 | 9 | 55 | 9 | A2W03 |



How to order :- Mention the Model number required

Example :- Wall mounting Bracket for 3 / 8 Filter , Regulator , Lubricator Series F14 , R14 , L14 : Ordering no: A 2 W 0 2

KIT FOR MODULAR CONSTRUCTION

For Modular construction , order accessories as given below

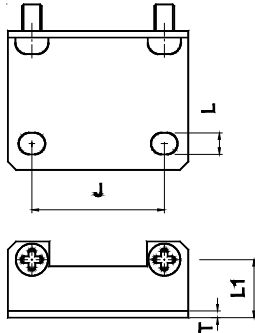
| | Wall mounting bracket | Piping adaptor |
|-------|-----------------------|----------------|
| FRCLM | 1 | 2 |
| FRLM | 2 | 2 |

AIR PREPARATION UNITS - ACCESSORIES

Accessories - CLAMPS

Cat No APA - 01

CLAMP for FILTER , LUBRICATOR



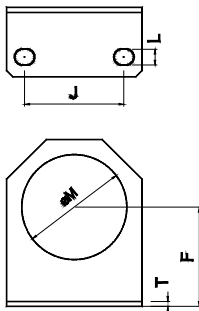
| Adoptable to Model series | J | L | L1 | T | Ordering No. |
|---------------------------|----|-----|------|---|--------------|
| F13, L13 | 28 | 5.5 | 14 | 2 | A2C31 |
| F14, L14 | 40 | 6.5 | 17.5 | 2 | A2C32 |
| F15, L15 | 55 | 8.5 | 22 | 2 | A2C33 |



How to order :- Mention the Model number required

Example :- Clamp for 3 / 8 Filter , Lubricator Series F14 , L14 : Ordering no: A 2 C 3 2

CLAMP for REGULATOR



| Adoptable to Model series | ØM | F | L | J | T | Ordering No. |
|---------------------------|------|----|-----|----|---|--------------|
| R13, FRC13 | 30.5 | 30 | 5.5 | 28 | 2 | A2C01 |
| R14, FRC14 | 42.5 | 40 | 6.5 | 40 | 2 | A2C02 |
| R15, FRC15 | 52.5 | 50 | 8.5 | 55 | 2 | A2C03 |

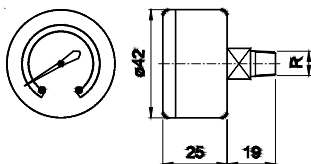


How to order :- Mention the Model number required

Example :- Clamp for 3 / 8 Regulator Series R14 , FRC 14 : Ordering no: A 2 C 0 2

Accessories - PRESSURE GAUGE

PRESSURE GAUGE



| R | Pressure range bar | Adoptable to Model series | Ordering No. |
|------|--------------------|---------------------------------------|--------------|
| R1/8 | 0 - 4 | R13, R14, R15, FRC13, FRC14, FRC15 | A2G01 |
| | 0 - 10 | | A2G02 |
| | 0 - 16 | | A2G03 |



How to order :- Mention the Model number required

Example :- Pressure Gauge for Regulator with Pressure range 0 - 10 bar : Ordering no : A 2 G 0 2