



NON RETURN VALVE

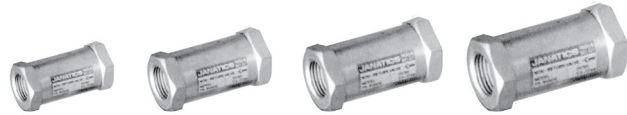
(Check Valve) Series GV1

Cat No GV1 - 01

Non - Return Valve G1/8, G1/4, G3/8, G1/2

Features

- Inline mounted
- Low cracking and closing pressure
- Bubble tight - elastomer seat



Technical Specifications

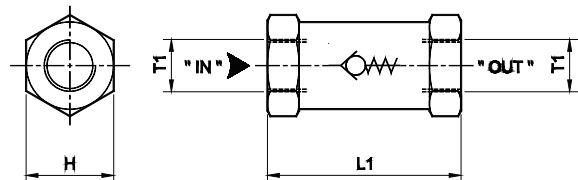
Ordering No	GV160	GV161	GV162	GV163
Size	G1/8	G1/4	G3/8	G1/2
Medium	Compressed air			
Working Pressure range	0.4 - 10 bar			
Ambient / Medium temperature	5° - 60° C			
Materials of construction	Brass, Nitrile, Acetal			
NW mm	3.5	7	10	13
Flow lts / min. [@]	400	1000	2800	4800
Weight Kg	0.068	0.098	0.102	0.232

@ Inlet pressure 6 bar, and pressure drop 1 bar

Operation

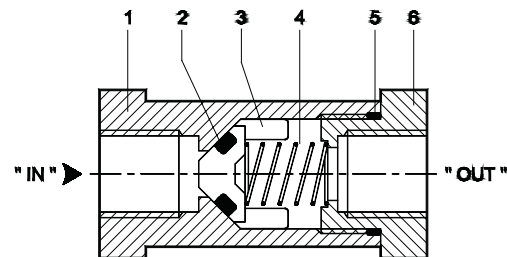
The valve shuts off instantaneously against reverse flow (from " OUT " port to " IN " port) and opens at low cracking pressure in the forward direction.

Ordering No	T1	H	L1
GV160	G1/8	19	40
GV161	G1/4	22	51
GV162	G3/8	24	54
GV163	G1/2	32	63



Spare parts list

Ref. no.	No. off	Part Name	Ordering no. for			
			GV160	GV161	GV162	GV163
1	1	Housing	-	-	-	-
2	1	'O'ring	650001	650112	650113	650103
3	1	Valve cone	724008	724009	724010	724011
4	1	Spring	-	-	-	-
5	1	'O'ring	650009	650018	650019	650020
6	1	Gland	-	-	-	-



Precautions

1. Note the direction of flow before installation and connect piping accordingly.
2. Flush pipings for dirt, dust, rust and other foreign particles.
3. Install in clean atmosphere.
4. Nipples of taper threads (R) to be used with teflon tape. Ensure Teflon tape doesnot enter the unit during tightening.
straight threads (G) to be used with sealing washer.

Subject to change