



Offers Automatic industrial lined solenoid valves for all pneumatic cylinders. These valves with sensitive reaction, long lifespan, available to form integrated valve group with the base to save installation space. Single control solenoid valves have memory function, Several standard voltage grades are optional.

How To Order

3V	110	06	NO	AC220V
Series	Body Model	Port Size	Valve Type	Coil Voltage
	110	M5	NO:Normally open	DC12V
	210	06-1/8"	NC:Normally closed	DC24V
	310	08-1/4"		AC110V
	410	10-3/8"		AC220V
		15-1/2"		AC380V
				Other Voltage can be Customized

3/2 way single solenoid valve Specification:

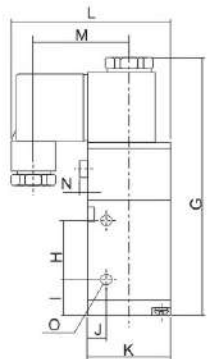
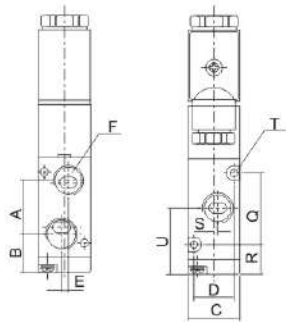
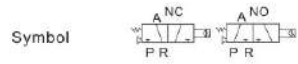
- .Port size: M5, 1/8", 1/4", 3/8", 1/2"
- .Activation: Pilot Control or Manual override
- .Valve Body Material: Aluminum Alloy
- .Working Temperature: -20~70°C
- .Fluid: Air (after filtered by 40 µm filter element)
- .Operating pressure: 0.15-0.8Mpa(1.5~8bar)
- .Electrical entry: DIN43650, Flying Leads
- .Ex-plosion Coil Available

Attention:

1. The valve should be used the medium lubricated by 40µm filterelement.
2. Check the voltage satisfied with the technical requirement.
3. Use the silencer to keep the exhaust port dust away.
4. No need to add oil for lubrication.

Accessory parts:

1. Pneumatic fitting: fitted on the P, A port
2. Silencer: fitted on the R port
3. Manifold: 2 to 20 stations



Dimensions:

Item Code	Unit:mm											
	A	B	C	D	E	F	G	H	I	J	K	L
3V110-M5	16	14	13	18	-	3-M5	85.8	21	12	7.7	27	53.5
3V110-06	16	14	13	18	2	3-G1/8"	85.8	21	12	7.7	27	53.5
3V210-06	18	21	17	22	-	3-G1/8"	111.5	25	15	8	35	66.5
3V210-08	18	21	17	22	3	3-G1/4"	111.5	25	15	8	35	66.5
3V310-08	24	20.5	20	27	-	3-G1/4"	119.4	30	17.5	10.5	40	69
3V310-10	24	20.5	20	27	-	3-G3/8"	119.4	30	17.5	10.5	40	69
3V410-15	31.5	25.5	27	34	-	3-G1/2"	137	51	15.5	13.5	50	74

Item Code	Unit:mm								
	M	N	O	Q	R	S	T	U	
3V110-M5	32.5	2.5	2-Φ3.3	19	12.5	-	2-Φ3.3	23	
3V110-06	32.5	2.5	2-Φ3.3	19	12.5	1	2-Φ3.3	23	
3V210-06	40	3	2-Φ3.3	33	12.5	1.5	2-Φ3.2	31	
3V210-08	40	3	2-Φ3.3	33	12.5	1.5	2-Φ3.2	31	
3V310-08	40	2.4	2-Φ4.3	35	15	-	2-Φ4.3	32.5	
3V310-10	40	2.4	2-Φ4.3	35	15	-	2-Φ4.3	32.5	
3V410-15	40	-	2-Φ4.3	48	18.5	2	2-Φ4.3	41.5	



Offers Automatic industrial lined solenoid valves for all pneumatic cylinders. These valves with sensitive reaction, long lifespan, available to form integrated valve group with the base to save installation space. Double control solenoid valves have memory function, Several standard voltage grades are optional.

How To Order

3V	120	06	AC220V
Series	Body Model	Port Size	Coil Voltage
	120	M5	DC12V
	220	06-1/8"	DC24V
	320	08-1/4"	AC110V
	420	10-3/8"	AC220V
		15-1/2"	AC380V
			Other Voltage can be Customized

3/2 way Double solenoid valve Specification:

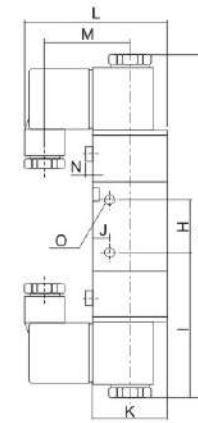
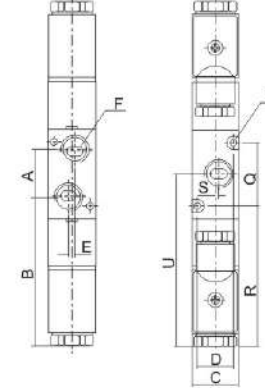
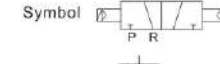
- .Port size: M5, 1/8", 1/4", 3/8", 1/2"
- .Activation: Pilot Control or Manual override
- .Valve Body Material: Aluminum Alloy
- .Working Temperature: -20~70°C
- .Fluid: Air (after filtered by 40 µm filter element)
- .Operating pressure: 0.15-0.8Mpa(1.5~8bar)
- .Electrical entry: DIN43650, Flying Leads
- .Ex-plosion Coil Available

Attention:

1. The valve should be used the medium lubricated by 40µm filterelement.
2. Check the voltage satisfied with the technical requirement.
3. Use the silencer to keep the exhaust port dust away.
4. No need to add oil for lubrication.

Accessory parts:

1. Pneumatic fitting: fitted on the P, A port
2. Silencer: fitted on the R port
3. Manifold: 2 to 20 stations



Dimensions:

Item Code	Unit:mm											
	A	B	C	D	E	F	G	H	I	J	K	L
3V120-M5	16	55.8	13	18	-	3-M5	127.6	21	53.3	7.7	27	53.5
3V120-06	16	55.8	13	18	2	3-G1/8"	127.6	21	53.3	7.7	27	53.5
3V220-06	18	74.5	17	22	-	3-G1/8"	165	25	68.4	8	35	66.5
3V220-08	18	74.5	17	22	3	3-G1/4"	165	25	68.4	8	35	66.5
3V320-08	24	75	20	27	-	3-G1/4"	174	30	72	10.5	40	69
3V320-10	24	75	20	27	-	3-G3/8"	174	30	72	10.5	40	69
3V420-15	31.5	79.5	27	34	-	3-G1/2"	190.5	18.5	73.5	13.5	50	74

Item Code	Unit:mm								
	M	N	O	Q	R	S	T	U	
3V120-M5	32.5	2.5	2-Φ3.3	19	54.3	-	2-Φ3.3	63.8	
3V120-06	32.5	2.5	2-Φ3.3	19	54.3	1	2-Φ3.3	63.8	
3V220-06	40	3	2-Φ3.3	33	66	1.5	2-Φ3.2	84.5	
3V220-08	40	3	2-Φ3.3	33	66	1.5	2-Φ3.2	84.5	
3V320-08	40	2.4	2-Φ4.3	35	69.4	-	2-Φ4.3	87	
3V320-10	40	2.4	2-Φ4.3	35	69.4	-	2-Φ4.3	87	
3V420-15	40	-	2-Φ4.3	48	73.5	2	2-Φ4.3	95	



Offers Automatic industrial lined solenoid valves for all pneumatic cylinders. These valves with sensitive reaction, long lifespan, available to form integrated valve group with the base to save installation space, Double control solenoid valves have memory function, Several standard voltage grades are optional.

How To Order

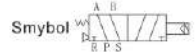
4V	210	08	AC220V
Series	Body Model	Port Size	Coil Voltage
	110	M5	DC12V
	210	06-1/8"	DC24V
	310	08-1/4"	AC110V
	410	10-3/8"	AC220V
		15-1/2"	AC380V
Other Voltage can be Customized			

5/2 way Single solenoid valve Specification:

- .Port size: M5, 1/8", 1/4", 3/8", 1/2"
- .Activation: Pilot Control or Manual override
- .Valve Body Material: Aluminum Alloy
- .Working Temperature: -10-70 °C
- .Fluid: Air (after filtered by 40µm filter element)
- .Operating pressure: 0.15-0.8Mpa(1.5-8Bar)
- .Electrical entry: DIN43650 or Flying leads
- .Ex-plosion Coil Available

Accessory parts:

1. Pneumatic fitting: fitted on the P, A(B) port
2. Silencer: fitted on the R(S) port
3. Manifold: 2 to 20 stations



Attention:

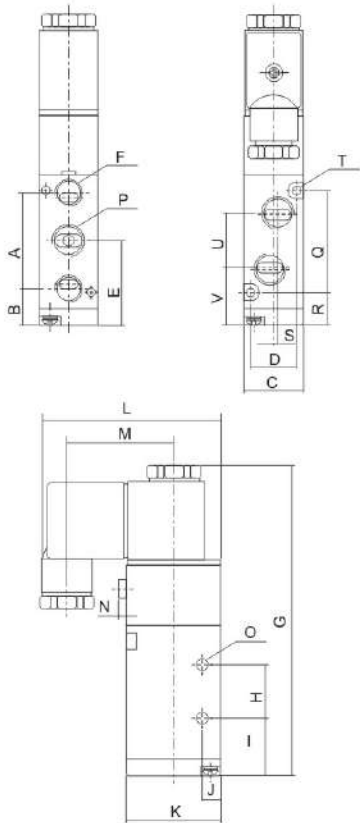
1. The valve should be used the medium lubricated by 40µm filterelement.
2. Check the voltage satisfied with the technical requirement
3. Use the silencer to keep the exhaust port dust away

Dimensions:

Unit:mm

Item Code	A	B	C	D	E	F	G	H	I	J	K	L
4V110-M5	27	14.5	13	18	28	5-M5X0.8	98	14	21	4	27	53.5
4V110-06	27	14.5	13	18	28	5-G1/8"	98	14	21	4	27	53.5
4V210-06	36	13.5	17	22	31.5	5-G1/8"	116.5	20	21.5	7	35	66.5
4V210-08	36	13.5	17	22	31.5	2-G1/8"	116.5	20	21.5	7	35	66.5
4V310-08	45	17.5	20	27	40	5-G1/4"	134.5	24	28	6.5	40	69
4V310-10	45	17.5	20	27	40	2-G1/4"	134.5	24	28	6.5	40	69
4V410-15	63	25.5	27	34	57	5-G1/2"	168	28	43	7.5	50	74

Item Code	M	N	O	P	Q	R	S	T	U	V
4V110-M5	32.5	2.5	2-Φ3.3	-	30	13	-	2-Φ3.3	14	21
4V110-06	32.5	2.5	2-Φ3.3	-	30	13	3	2-Φ3.3	14	21
4V210-06	40	3	2-Φ4.3	-	38	12.5	-	2-Φ3.2	18	22.5
4V210-08	40	3	2-Φ4.3	3-G1/4"	38	12.5	3	2-Φ3.2	18	22.5
4V310-08	40	2.4	2-Φ4.3	-	50	15	-	2-Φ4.3	22	29
4V310-10	40	2.4	2-Φ4.3	3-G3/8"	50	15	4	2-Φ4.3	24	28
4V410-15	40	-	2-Φ5.35	-	72	21	4	2-Φ4.3	36	39



Offers Automatic industrial lined solenoid valves for all pneumatic cylinders. These valves with sensitive reaction, long lifespan, available to form integrated valve group with the base to save installation space, Double control solenoid valves have memory function, Several standard voltage grades are optional.

How To Order

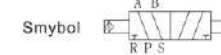
4V	220	08	AC220V
Series	Body Model	Port Size	Coil Voltage
	120	M5	DC12V
	220	06-1/8"	DC24V
	320	08-1/4"	AC110V
	420	10-3/8"	AC220V
		15-1/2"	AC380V
Other Voltage can be Customized			

5/2 way Double solenoid valve Specification:

- .Port size: M5, 1/8", 1/4", 3/8", 1/2"
- .Activation: Pilot Control or Manual override
- .Valve Body Material: Aluminum Alloy
- .Working Temperature: -10-70 °C
- .Fluid: Air (after filtered by 40µm filter element)
- .Operating pressure: 0.15-0.8Mpa(1.5-8Bar)
- .Electrical entry: DIN43650 or Flying leads
- .Ex-plosion Coil Available

Accessory parts:

1. Pneumatic fitting: fitted on the P, A(B) port
2. Silencer: fitted on the R(S) port
3. Manifold: 2 to 20 stations



Attention:

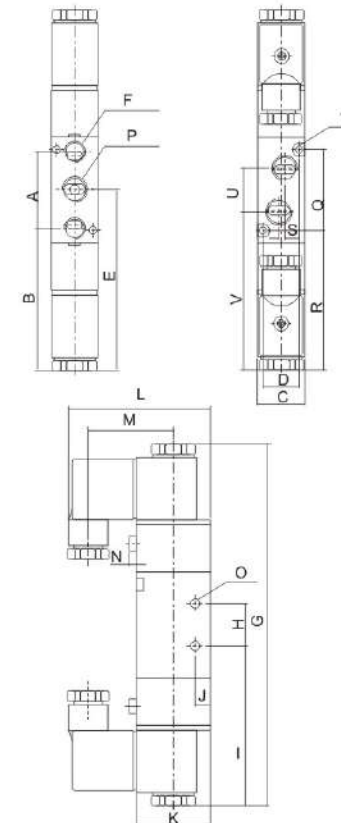
1. The valve should be used the medium lubricated by 40µm filterelement.
2. Check the voltage satisfied with the technical requirement
3. Use the silencer to keep the exhaust port dust away

Dimensions:

Unit:mm

Item Code	A	B	C	D	E	F	G	H	I	J	K	L
4V120-M5	27	56.3	13	18	69.8	5-M5X0.8	136.9	14	62.8	4	27	53.5
4V120-06	28	56	13	18	69.8	5-G1/8"	136.9	14	62.8	4	27	53.5
4V220-06	36	67	17	22	85	5-G1/8"	169.8	20	75	7	35	66.5
4V220-08	36	67	17	22	85	2-G1/8"	169.8	20	75	7	35	66.5
4V320-08	45	71.9	20	27	94.4	5-G1/4"	188.8	24	82.4	6.5	40	69
4V320-10	45	71.9	20	27	94.4	3-G3/8"	188.8	24	82.4	6.5	40	69
4V420-15	63	79.5	27	34	111	5-G1/2"	222	28	97	7.5	50	74

Item Code	M	N	O	P	Q	R	S	T	U	V
4V120-M5	32.5	2.5	2-Φ3.3	-	30	54.8	-	2-Φ3.3	14.1	62.8
4V120-06	32.5	2.5	2-Φ3.3	-	30	54.8	3	2-Φ3.3	16	62.8
4V220-06	40	3	2-Φ4.3	-	38	66	-	2-Φ3.2	18	76
4V220-08	40	3	2-Φ4.3	3-G1/4"	38	66	3	2-Φ3.2	21	74.4
4V320-08	40	2.4	2-Φ4.3	-	50	69.4	-	2-Φ4.3	22	83.4
4V320-10	40	2.4	2-Φ4.3	2-G1/4"	50	69.4	4	2-Φ4.3	24	82.4
4V420-15	40	-	2-Φ5.35	-	72	75	4	2-Φ4.3	36	93





Offers 5/3 way double solenoid valve. These valves with good tightness and sensitive reaction. They are equipped with affiliated manual devices to facilitate installation and debugging. Double control solenoid valves have memory function, Several standard voltage grades.

How To Order

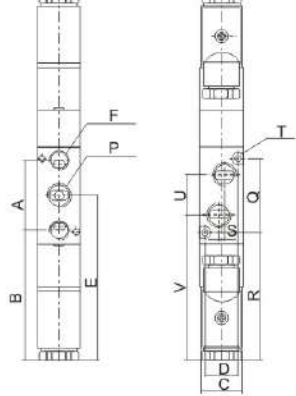
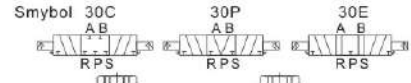
4V	230	08	C	AC220V
Series	Body Model	Port Size	Valve type	Coil Voltage
	130	M5	C: Closed in center	DC12V
	230	06-1/8"	E: Exhaust in center	DC24V
	330	08-1/4"	P: Pressure in center	AC110V
	430	10-3/8"		AC220V
		15-1/2"		AC380V
				Other Voltage can be Customized

5/2 way Single solenoid valve Specification:

- .Port size: M5, 1/8", 1/4", 3/8", 1/2"
- .Valve type: 5 port 3 position
- .Activation: pilot control or manual override
- .Valve body material: aluminum alloy
- .Work temperature: -10 - 70°C
- .Fluid: Air (to be filtered by 40 µm filter element)
- .Max. frequency: 3 cycle/sec

Accessory parts:

1. Pneumatic fittings: fitted on the P,A(B)port
2. Silencer: fitted on the R(S)port
3. Manifold: 2 to 20 stations



Attention:

1. Check the voltage satisfied with the technical requirement.
2. Use the silencer to keep the exhaust port dust away.
3. The maximum actuation frequency is in the no-load state.

Dimensions:

Item Code	A	B	C	D	E	F	G	H	I	J	K	L
4V130-M5	27	56.3	13	18	69.8	5-M5X0.8	154.6	14	62.8	4	27	53.5
4V130-06	28	56.3	13	18	69.8	5-G1/8"	154.6	14	62.8	4	27	53.5
4V230-06	36	67	17	22	85	5-G1/8"	169.8	20	75	7	35	66.5
4V230-08	36	67	17	22	85	2-G1/8"	169.8	20	75	7	35	66.5
4V330-08	45	71.9	20	27	94.4	5-G1/4"	188.8	24	82.4	6.5	40	69
4V330-10	45	71.9	20	27	94.4	3-G3/8"	188.8	24	82.4	6.5	40	69
4V430-15	63	79.5	27	34	111	5-G1/2"	243	28	97	7.5	50	74

Item Code	M	N	O	P	Q	R	S	T	U	V
4V130-M5	32.5	2.5	2-Φ3.3	-	30	54.8	-	2-Φ3.3	14	62.8
4V130-06	32.5	2.5	2-Φ3.3	-	30	54.8	3	2-Φ3.3	16	62
4V230-06	40	3	2-Φ4.3	-	38	66	-	2-Φ3.2	18	76
4V230-08	40	3	2-Φ4.3	3-G1/4"	38	66	3	2-Φ3.2	21	74.4
4V330-08	40	2.4	2-Φ4.3	-	50	69.4	-	2-Φ4.3	22	83.4
4V330-10	40	2.4	2-Φ4.3	2-G1/4"	50	69.4	4	2-Φ4.3	24	82.4
4V430-15	40	-	2-Φ5.35	-	72	75	4	2-Φ4.3	36	93



Offers Automatic industrial lined solenoid valve for all air cylinders. These valves with NAMUR standard mounted with panel have sensitive reaction, long lifespan characteristics. Single coil has memory function, different voltages are also available.

How To Order

4V	210	06	B	AC220V
Series	Body Model	Port Size	B: Panel Mounted	Coil Voltage
	210	06-1/8"		DC12V
	310	08-1/4"		DC24V
	220	10-3/8"		AC110V
	320			AC220V
				AC380V
				Other Voltage can be Customized

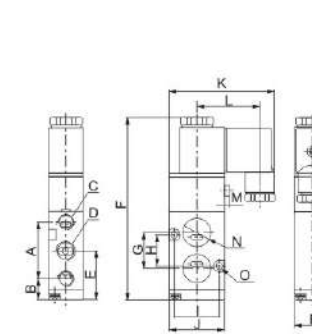
5/2 ways Single solenoid valve with NAMUR standard

- .Mounted with panel
- .Activation: Pilot Control or Manual override
- .Valve Body Material: Aluminum Alloy
- .Working Temperature: -10-70 °C
- .Fluid: Air (after filtered by 40µm filter element)
- .Operating pressure: 0.15-0.8Mpa(1.5-8Bar)
- .Electrical entry: DIN43650, Flying leads
- .Ex-plosion Coil Available

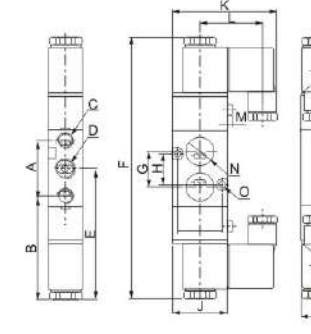
Accessory parts:

1. Pneumatic fitting: fitted on the P, A(B) port
2. Silencer: fitted on the R(S) port

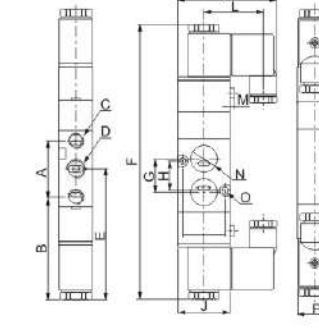
●4V210-08B



●4V220-08B



●4V230-08B



Dimensions:

	A	B	C	D	E	F	G	H	I	J	K	L	M	N	O	P
4V210-06B	36	13.5	2-G1/8"	G1/8"	31.5	116.5	23	20	29	35	66.5	40	3	2-Φ18×1.4	2-Φ4.3	22
4V210-08B	36	13.5	2-G1/8"	G1/4"	31.5	116.5	23	20	29	35	66.5	40	3	2-Φ18×1.4	2-Φ4.3	22
4V310-08B	45	17.5	2-G1/4"	G1/4"	40	134.5	27	24	32	40	69	40	2.4	2-Φ20×1.4	2-Φ5.5	27
4V310-10B	45	17.5	2-G1/4"	G3/8"	40	134.5	27	24	32	40	69	40	2.4	2-Φ20×1.4	2-Φ5.5	27

	A	B	C	D	E	F	G	H	I	J	K	L	M	N	O	P
4V220-06B	36	66.9	2-G1/8"	G1/8"	84.9	169.8	23	20	29	35	66.5	40	3	2-Φ18×1.4	2-Φ4.3	22
4V220-08B	36	66.9	2-G1/8"	G1/4"	84.9	169.8	23	20	29	35	66.5	40	3	2-Φ18×1.4	2-Φ4.3	22
4V320-08B	45	71.9	2-G1/4"	G1/4"	94.4	188.8	27	24	32	40	69	40	2.4	2-Φ20×1.4	2-Φ5.5	27
4V320-10B	45	71.9	2-G1/4"	G3/8"	94.4	188.8	27	24	32	40	69	40	2.4	2-Φ20×1.4	2-Φ5.5	27

	A	B	C	D	E	F	G	H	I	J	K	L	M	N	O	P
4V230-06B	36	66.9	2-G1/8"	G1/8"	84.9	188.8	23	20	29	35	66.5	40	3	2-Φ18×1.4	2-Φ4.3	22
4V230-08B	36	66.9	2-G1/8"	G1/4"	84.9	188.8	23	20	29	35	66.5	40	3	2-Φ18×1.4	2-Φ4.3	22
4V330-08B	45	71.9	2-G1/4"	G1/4"	94.4	207.8	-	24	32	40	69	40	2.4	2-Φ20×1.4	2-Φ5.5	27
4V330-10B	45	71.9	2-G1/4"	G3/8"	94.4	207.8	-	24	32	40	69	40	2.4	2-Φ20×1.4	2-Φ5.5	27



Offers Automatic industrial lined pneumatic valves for all pneumatic cylinders. These valves Internal hole adopts special processing technology which has little attrition friction, low start pressure and long service life, with good tightness, sensitive reaction, available to form integrated valve group with the base to saver installa tionspace, air control valves have memory function.

How To Order

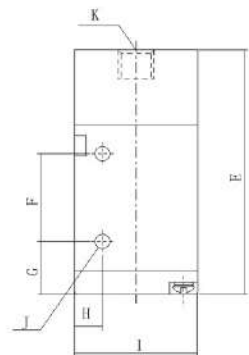
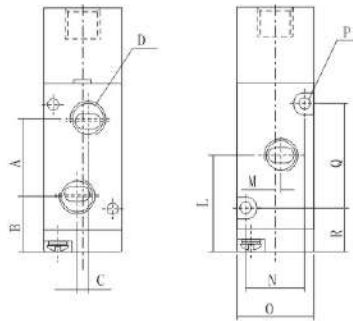
3A	110	06	NO
Series	Body Model	Port Size	Acting Type
	110	M5	NC:Normally close
	210	06-1/8"	NO:Normally open
	310	08-1/4"	
	410	10-3/8"	
		15-1/2"	

3/2 way Single air control valve Specification:

- .Port size: M5, 18", 114", 3/8", 1/2"
- .Activation: Exterior Control of Manual override Valve
- .Body Material: Aluminum Alloy
- .Fluid: Air (after filtered by 40um filter element)
- .Operating pressure: 0.15-0.8Mpa(21~114psi)Temperature:-20~70 °C
- .Max.frequency:5 cycle/sec

Accessory parts:

- 1 Pneumatic fitting: fitted on the P. A port
2. Silencer: fitted on the R port
3. Manifold: 2 to 20 stations



Attention:

- 1.No need to add oil for lubrication.
- 2.Use the silencer to keep the exhaust port dust away
- 3.Read the product's instruction carefully before installation to check if the product fully meets

Dimensions:

Item Code	A	B	C	D	E	F	G	H	I	Unit:mm
3A110-M5	16	14	-	3-M5	56.5	21	11.5	7.7	27	
3A110-06	16	14	2	3-G1/8"	56.5	21	11.5	7.7	27	
3A210-06	22.5	16	-	3-G1/8"	70	25	15	8	35	
3A210-08	22.5	16	3	3-G1/4"	70	25	15	8	35	
3A310-08	24	20.5	-	3-G1/4"	80.5	30	17.5	10.5	40	
3A310-10	24	20.5	-	3-G3/8"	80.5	30	17.5	10.5	40	
3A410-15	31.5	25.5	-	3-G1/2"	94.5	51	15.5	13.5	50	

Item Code	J	K	L	M	N	O	P	Q	R
3A110-M5	2-Φ3.3	G1/8"	23	-	13	18	2-Φ3.3	19	12.5
3A110-06	2-Φ3.3	G1/8"	23	1	13	18	2-Φ3.3	19	12.5
3A210-06	2-Φ3.2	G1/8"	27.5	1.5	17	22	2-Φ3.2	30	12.5
3A210-08	2-Φ3.2	G1/8"	27.5	1.5	17	22	2-Φ3.2	30	12.5
3A310-08	2-Φ4.3	G1/8"	32.5	-	20	27	2-Φ4.3	35	15
3A310-10	2-Φ4.3	G1/8"	32.5	-	20	27	2-Φ4.3	35	15
3A410-15	2-Φ4.3	G1/8"	41.5	2	27	34	2-Φ4.3	48	18.5



Offers Automatic industrial lined pneumatic valves for all pneumatic cylinders. These valves Internal hole adopts special processing technology which has little attrition friction, low start pressure and long service life, with good tightness, sensitive reaction, available to form integrated valve group with the base to saver installa tionspace, Double air control valves have memory function.

How To Order

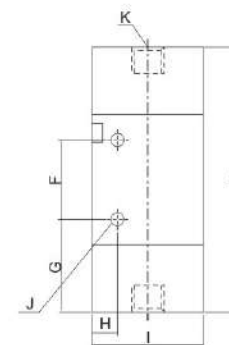
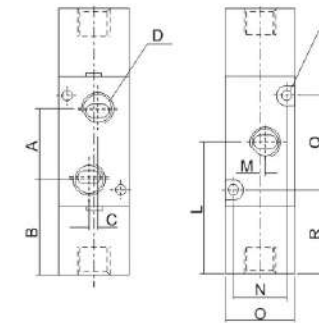
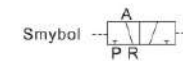
3A	120	06	NO
Series	Body Model	Port Size	Acting Type
	120	M5	NC:Normally close
	220	06-1/8"	NO:Normally open
	320	08-1/4"	
	420	10-3/8"	
		15-1/2"	

3/2 way Single air control valve Specification:

- .Port size: M5, 18", 114", 3/8", 1/2"
- .Activation: Exterior Control of Manual override Valve
- .Body Material: Aluminum Alloy
- .Fluid: Air (after filtered by 40um filter element)
- .Operating pressure: 0.15-0.8Mpa(21~114psi)Temperature:-20~70 °C
- .Max.frequency:5 cycle/sec

Accessory parts:

- 1 Pneumatic fitting: fitted on the P. A port
2. Silencer: fitted on the R port
3. Manifold: 2 to 20 stations



Attention:

- 1.No need to add oil for lubrication.
- 2.Use the silencer to keep the exhaust port dust away
- 3.Read the product's instruction carefully before installation to check if the product fully meets

Dimensions:

Item Code	A	B	C	D	E	F	G	H	I	Unit:mm
3A120-M5	16	26.5	-	3-M5	69	21	24	7.7	27	
3A120-06	16	26.5	2	3-G1/8"	69	21	24	7.7	27	
3A220-06	22.5	35.5	-	3-G1/8"	84	25	29.5	8	35	
3A220-08	22.5	35.5	3	3-G1/4"	84	25	29.5	8	35	
3A320-08	24	36	-	3-G1/4"	96	30	33	10.5	40	
3A320-10	24	36	-	3-G3/8"	96	30	33	10.5	40	
3A420-15	31.5	39.5	-	3-G1/2"	106.5	51	48.5	13.5	50	

Item Code	J	K	L	M	N	O	P	Q	R
3A120-M5	2-Φ3.3	2-G1/8"	34.5	-	13	18	2-Φ3.3	19	25
3A120-06	2-Φ3.3	2-G1/8"	34.5	1	13	18	2-Φ3.3	19	25
3A220-06	2-Φ3.2	2-G1/8"	45.5	1.5	17	22	2-Φ3.2	30	27
3A220-08	2-Φ3.2	2-G1/8"	45.5	1.5	17	22	2-Φ3.2	30	27
3A320-08	2-Φ4.3	2-G1/8"	48	-	20	27	2-Φ4.3	35	30.5
3A320-10	2-Φ4.3	2-G1/8"	48	-	20	27	2-Φ4.3	35	30.5
3A420-15	2-Φ4.3	2-G1/8"	55	2	27	34	2-Φ4.3	48	35



Offers Automatic industrial lined pneumatic valves for all pneumatic cylinders, No need to add oil for lubrication. Assemble with the pipe to save installation space. Two position air valves have memory functions. Single air control 5/2 way.

How To Order

4A	110	06	NO
Series	Body Model	Port Size	Acting Type
	110	M5	NC:Normally close
	210	06-1/8"	NO:Normally open
	310	08-1/4"	
	410	10-3/8"	
		15-1/2"	

5/2 way Single air control valve Specification:

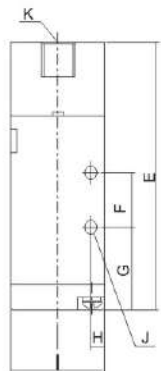
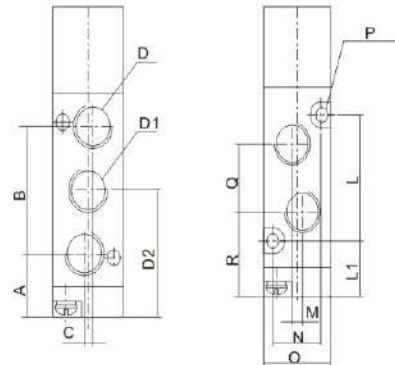
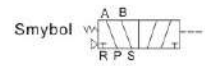
- .Port size: M5, 1/8", 3/8", 1/2"
- .Acting: Exterior control
- .Operating pressure: 0.15-0.8Mpa(1.5-8Bar)
- .Valve Body Material: Aluminum alloy
- .Fluid: Air(after filtered by 40µm filter element)
- .Working Temperature: -20-70°C
- .Lubrication: Not required
- .The maximum actuation frequency of no-load state

Attention:

1. Use the silencer to keep the exhaust port dust away
2. The valve should be used the medium lubricated by 40µm filterelement

Accessory parts:

1. Pneumatic fitting: fitted on the P,A(B) port
2. Silencer: fitted on the R(S) port
3. Manifold: 2 to 20 stations



Dimensions:

Item Code	A	B	C	D	D1	D2	E	F	G	H	I	Unit:mm
4A110-M5	27	14.5	-	5-M5×0.8	-	28	68.7	14	21	4	27	
4A110-06	28	14.2	2	5-G1/8"	-	28.2	68.7	14	21	4	27	
4A210-06	36	13.5	-	5-G1/8"	-	31.5	77.7	20	21.5	7	35	
4A210-08	36	13.5	-	2-G1/8"	3-G1/4"	31.7	77.7	20	21.5	7	35	
4A310-08	45	17.5	-	5-G1/4"	-	40	95.5	24	28	6.5	40	
4A310-10	45	17.5	-	2-G1/4"	3-G3/8"	40	95.5	24	28	6.5	40	
4A410-15	63	25.5	-	5-G1/2"	-	57	128	28	43	7.5	50	

Item Code	J	K	L	L1	M	N	O	P	Q	R
4A110-M5	2-Φ3.3	G1/8"	30	13	-	13	18	2-Φ3.3	14	21
4A110-06	2-Φ3.3	G1/8"	30	13	3	13	18	2-Φ3.3	16	20.2
4A210-06	2-Φ4.3	G1/8"	38	12.5	-	17	22	2-Φ3.2	18	22.5
4A210-08	2-Φ4.3	G1/8"	38	12.5	3	17	22	2-Φ3.2	21	21
4A310-08	2-Φ4.3	G1/8"	50	15	-	20	27	2-Φ4.3	22	29
4A310-10	2-Φ4.3	G1/8"	50	15	4	20	27	2-Φ4.3	24	28
4A410-15	2-Φ5.5	G1/8"	72	21	4	27	34	2-Φ4.3	36	39



Offers Automatic industrial lined pneumatic valves for all pneumatic cylinders, No need to add oil for lubrication. Assemble with the pipe to save installation space. Double air control valves have memory characteristics. Three position air valves have three central functions for you to choose from.

How To Order

4A	120	06	NO
Series	Body Model	Port Size	Acting Type
	120	M5	NC:Normally close
	220	06-1/8"	NO:Normally open
	320	08-1/4"	
	420	10-3/8"	
		15-1/2"	

5/2 way Double air control valve Specification

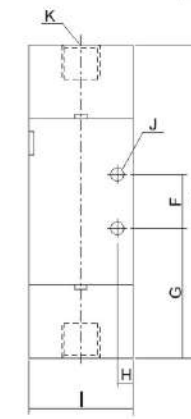
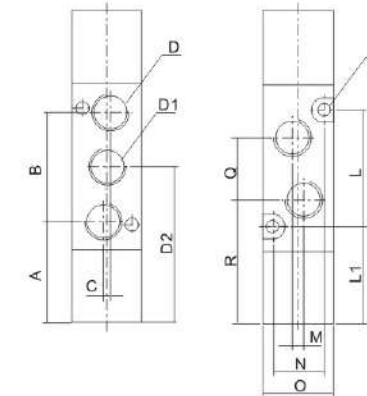
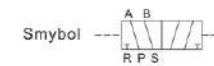
- .Port size: M5, 1/8", 1/4", 3/8", 1/2"
- .PT thread, NPT thread and G thread are available
- .Acting: Exterior control
- .Operating pressure: 0.15-0.8Mpa(1.5-8Bar)
- .Valve Body Material: Aluminum alloy
- .Fluid: Air(after filtered by 40µm filter element)
- .Working Temperature: -20-70°C
- .Lubrication: Not required

Attention:

1. Use the silencer to keep the exhaust port dust away
2. The valve should be used the medium lubricated by 40µm filterelement
3. Not direct water entry

Accessory parts:

1. Pneumatic fitting: fitted on the P,A(B) port
2. Silencer: fitted on the R(S) port
3. Manifold: 2 to 20 stations



Dimensions:

Item Code	A	B	C	D	D1	D2	E	F	G	H	I	Unit:mm
4A120-M5	27	27	-	5-M5×0.8	-	40.5	81	14	33.5	4	27	
4A120-06	28	26.5	2	5-G1/8"	-	40.5	81	14	33.5	4	27	
4A220-06	36	28	-	5-G1/8"	-	46	92	20	36	7	35	
4A220-08	36	28	-	2-G1/8"	3-G1/4"	46	92	20	36	7	35	
4A320-08	45	33	-	5-G1/4"	-	55.5	111	24	43.5	6.5	40	
4A320-10	45	33	-	2-G1/4"	3-G3/8"	55.5	111	24	43.5	6.5	40	
4A420-15	63	39.5	-	5-G1/2"	-	71	142	28	57	7.5	50	

Item Code	J	K	L	L1	M	N	O	P	Q	R
4A120-M5	2-Φ3.3	2-G1/8"	30	25.5	-	13	18	2-Φ3.3	14	33.5
4A120-06	2-Φ3.3	2-G1/8"	30	25.5	3	13	18	2-Φ3.3	16	32.5
4A220-06	2-Φ4.3	2-G1/8"	38	27	-	17	22	2-Φ3.2	18	37
4A220-08	2-Φ4.3	2-G1/8"	38	27	3	17	22	2-Φ3.2	21	35.5
4A320-08	2-Φ4.3	2-G1/8"	50	30.5	-	20	27	2-Φ4.3	22	44.5
4A320-10	2-Φ4.3	2-G1/8"	50	30.5	4	20	27	2-Φ4.3	24	43.5
4A420-15	2-Φ5.5	2-G1/8"	72	35	4	27	34	2-Φ4.3	36	53



Offers 5/3 way double pneumatic air valve. These valves are acted by exterior air control, with good tightness and sensitive reaction. They have three kinds of central function to choice, integrate with the manifold to save installation space. Double control solenoid valves have memory function.

How To Order

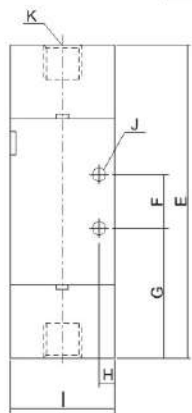
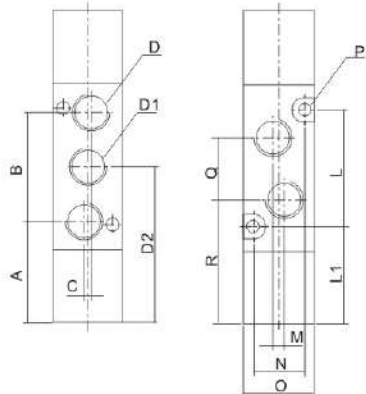
4A	130	08	C
Series	Body Model	Port Size	Valve type:
	130	M5	C: Double air control 5/3 way closed
	230	06-1/8"	E: Double air control 5/3 way exhaust center
	330	08-1/4"	P: Double air control 5/3 way pressure center
	430	10-3/8"	
		15-1/2"	

5/2 way Double air control valve Specification

- .Port size: M5, 1/8", 1/4", 3/8", 1/2"
- .Valve typr: 5 pore 3 position
- .Acting: Exterior control
- .Valve body material: aluminum alloy
- .Work temperature: -10 - 70°C
- .Fluid: Air(to be filtered by 40 µm filter element)
- .Max.frequency: 3 cycle/sec

Accessory parts:

1. Pneumatic fittings: fitted on the P,A(B)port
2. Silencer fitted on the R(S)port
3. Manifold 2 to 20 stations



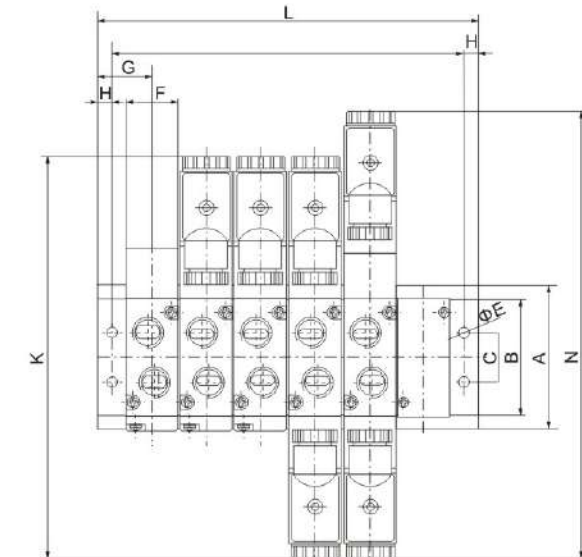
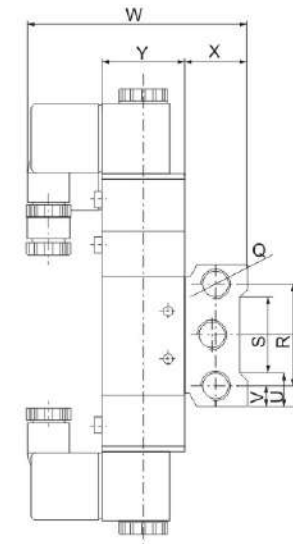
Attention:

1. Check the voltage satisfied with the technical requirement.
2. Use the silencer to keep the exhaust port dust away.
3. The maximum actuation frequency is in the no-load state.

Dimensions:

Item Code	Unit:mm										
	A	B	C	D	D1	D2	E	F	G	H	I
4A130-M5	27	27	-	5-M5×0.8	-	40.5	96	14	33.5	4	27
4A130-06	28	26.5	2	5-G1/8"	-	40.5	96	14	33.5	4	27
4A230-06	36	28	-	5-G1/8"	-	46	111	20	36	7	35
4A230-08	36	28	-	2-G1/8"	3-G1/4"	46	111	20	36	7	35
4A330-08	45	33	-	5-G1/4"	-	55.5	130	24	43.5	6.5	40
4A330-10	45	33	-	2-G1/4"	3-G3/8"	55.5	130	24	43.5	6.5	40
4A430-15	63	39.5	-	5-G1/2"	-	71	-	28	57	7.5	50

Item Code	Unit:mm										
	J	K	L	L1	M	N	O	P	Q	R	
4A130-M5	2-Φ3.3	2-G1/8"	30	25.5	-	13	18	2-Φ3.3	14	33.5	
4A130-06	2-Φ3.3	2-G1/8"	30	25.5	3	13	18	2-Φ3.3	16	32.5	
4A230-06	2-Φ4.3	2-G1/8"	38	27	-	17	22	2-Φ3.2	18	37	
4A230-08	2-Φ4.3	2-G1/8"	38	27	3	17	22	2-Φ3.2	21	35.5	
4A330-08	2-Φ4.3	2-G1/8"	50	30.5	-	20	27	2-Φ4.3	22	44.5	
4A330-10	2-Φ4.3	2-G1/8"	50	30.5	4	20	27	2-Φ4.3	24	43.5	
4A430-15	2-Φ5.5	2-G1/8"	72	35	4	27	34	2-Φ4.3	36	53	



Dimensions:

Item Code	Unit:mm																									
	A	B	C	E	F	G	H	I	J	K	L															
											1F	2F	3F	4F	5F	6F	7F	8F	9F	10F	11F	12F	13F	14F	15F	16F
100M-□F	58	43.2	20	4.5	18.3	19	5	10	0.8	139.4	38	57	76	95	114	133	152	171	190	209	228	247	266	285	304	323
200M-□F	61	50.7	21	4.5	22.4	23	6	12	1.2	170	46	69	92	115	138	161	184	207	230	253	276	299	322	345	368	391
300M-□F	75	64.8	26	4.5	27.3	27	6	13.5	2.5	188.8	54	82	110	138	166	194	222	250	278	306	334	362	-	-	-	-
400M-□F	104	94.5	32	5.5	34.3	31.5	7	14.5	5	221.8	63	98	133	168	203	238	273	-	-	-	-	-	-	-	-	-

Item Code	M	Unit:mm																								
		P																								
		1F	2F	3F	4F	5F	6F	7F	8F	9F	10F	11F	12F	13F	14F	15F	16F	Q	R	S	T	U	V	W	X	Y
100M-□F	154.5	28	47	66	85	104	123	142	161	180	199	218	237	256	275	294	313	PT1/4	40	30	29	14	9	79	25	27
200M-□F	189	34	57	80	103	126	149	172	195	218	241	264	287	310	333	356	379	PT1/4	43	32	30.5	14.5	9	93	26	35
300M-□F	208	42	70	98	126	154	182	210	238	266	294	322	350	-	-	-	-	PT3/8	53	48	37.5	13.5	11	99.5	30	40
400M-□F	243	49	84	119	154	189	224	259	-	-	-	-	-	-	-	-	-	PT1/2	68	67	52	18.5	18	112.5	38	50