

Product overview

EAV electric ball valve is the upgrade of EAV series, the driver adopts the metal connecting head to closely connect with the ball valve body, the product is mainly used in HVAC heating, water supply system on-off control. The valve body is forged with brass and the surface is nickel plated.

Product features

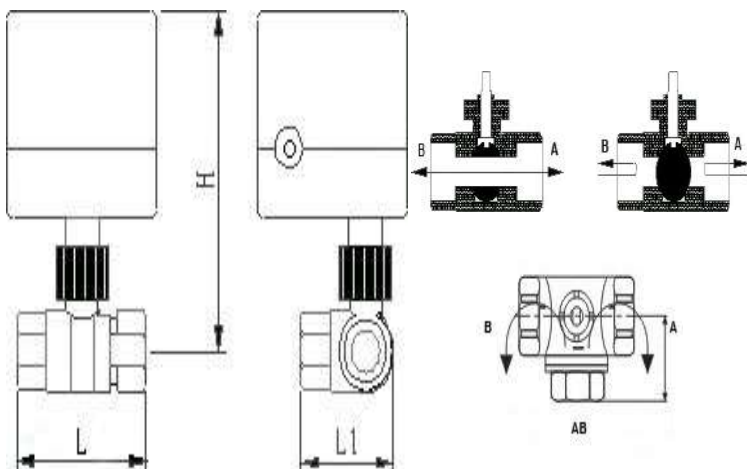
- Within certain size, the structure is simple and the operation is simple
- Light weight, small installation space
- Has the lowest flow resistance
- The valve can be opened and closed quickly
- Symmetrical body, suitable for high pressure service

Drive parameters

The motor type	Synchronous motor	The power cord length	300mm
The action time	15S	The connection method	Pipe thread G
Shut down the differential	≤0.6Mpa	Nominal pressure	Pn16-Pn20
Medium temperature	15~95°C		
Power consumption	50/60hz 6W(when valve is open only)		
Applicable medium	Cold, hot water or 50% ethanol solution		
Voltage specification	24VDC/220VDC		

Body parameters

Product specification	CAL	Product size (mm)			Kv value 3 M/H	The net weight KG
		H	L	L1		
EAV two-way	DN15(1/2)	113	50		12	0.15
	DN20(/4)	123	55		17	0.21
	DN25(1)	122	65		20	0.3
	DN32(1-1/4)	128	74		25	0.54
	DN40(1-1/2)	132	82		31	0.6
	DN50(2)	139	98		37	1.18
EAV three-way	DN15(1/2)	112	56	42	12	0.2
	DN20(/4)	119	68	52	17	0.35
	DN25(1)	124	83	64	20	0.54
	DN32(1-1/4)	133	104	79	25	1.03
	DN40(1-1/2)	142	124	96	31	1.94



The product type

Product model	The control mode	works
EAV	Three-Line Two-control	The driver is driven by bidirectional synchronous motor. The open valve or close valve circuit provides power separately. When the open valve or close valve is in place, the internal power of the driver will be automatically cut off.

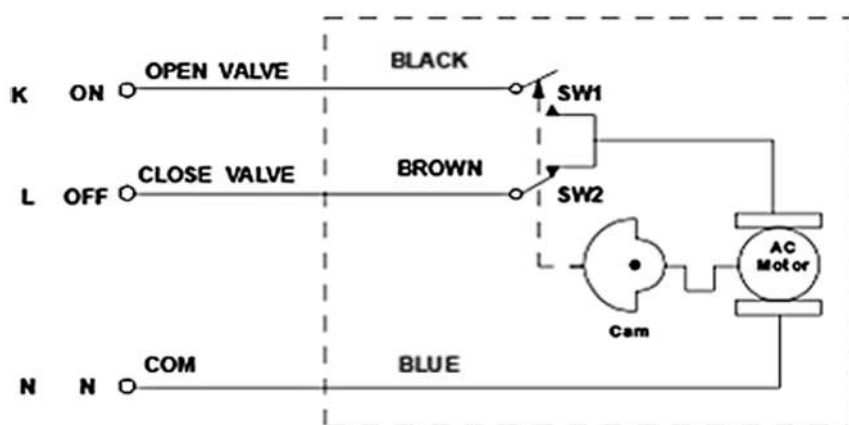
Technical Parameters

Maximum working pressure	0.60Mpa
Circulation medium	Fluid , air
Rated voltage	DC220V/DC24V
Open/close time	~15S
Life time	80000times testing pressure is 0.4Mpa,medium is water)
Valve body material	Brass
Actuator material	Engineering plastics ABS
Torque force	8N.m
Cable Length	0.3m
Environment temperature	0 ~50
Medium temperature	2 ~90
Manual operation	NO
Open/close indicator	NO
Protection class	IP54
Power consumption:	6W
Connection type:	G thread

Three-wire two-control circuit diagram

AC220V

3 wire two control



1. Connecting **SW1** and **OPEN**, the valve opens, getting the position, automatically power off, the valve remain fully open position.
2. Connecting **SW2** and **CLOSE**, the valve close, getting the position, automatically power off, the valve remains side passes position (full closed)